



NAUTILUS MARINE INSURANCE LIPTON CUP REGATTA

14, 15 & 16 November 2025
Keelboat Notice of Race





Nautilus Marine Insurance
Lipton Cup Regatta
Keelboat Classes
Friday 14 – Twilight Invitational,
Saturday 15 & Sunday 16 November 2025
Notice of Race [After NTC#1]

Royal Yacht Club of Victoria (RYCV) as the Organizing Authority (OA) invites entries to the Nautilus Marine Insurance Lipton Cup Regatta under the following conditions:

1. Rules

- 1.1. The event is governed by the rules as defined in the Racing Rules of Sailing including the prescriptions of Australian Sailing (RRS).
- 1.2. RRS Appendix T (Arbitration) shall apply.
- 1.3. The Australian Sailing (AS) Special Regulations Part 1 will apply.
- 1.4. The Offshore Rating Council (ORC) rules where applicable.
- 1.5. The Australian Measurement System (AMS) rules where applicable.
- 1.6. The class rules for any one design classes where applicable.
- 1.7. **[NP]** Competitors will be allocated an Event Handicap (EHC) by the Regatta Handicap Committee. EHC are performance-based handicaps and may be changed at any time. The allocated EHC shall not be grounds for protest or redress. This changes RRS 60.1 and RRS 61.1(a).
- 1.8. **[DP]** Denotes a rule for which the penalty is at the discretion of the Protest Committee. This changes RRS 63.5.
- 1.9. **[SP]** Denotes a rule for which a standard penalty may be applied by the Race Committee or Technical Committee without hearing. This changes RRS A5.
- 1.10. **[NP]** Denotes a rule that shall not be grounds for protests by a boat. This changes RRS 60.1.

2. Equipment and Entry

- 2.1. Boats will comply with AS Special Regulations – Part 1, Category 6 (includes working VHF radio)
- 2.2. RRS 51 is changed to allow for boats designed and built with moveable ballast.
- 2.3. RRS 52 is changed to allow the adjustment of movable water ballast or



canting keels and the use of stored power to do so.

- 2.4. RRS 52 is changed to allow powered winches.
- 2.5. **[SP]** Boats will carry no anchor forward of the stem or with any part of it outboard, except when anchoring. The standard penalty is to be scored DNS.
- 2.6. All competitors shall be members of a club affiliated with Australian Sailing, a World Sailing Member National Authority (MNA) or apply for a Regatta Pass covering the three days of the regatta using the link available on the Lipton cup website.
- 2.7. <https://www.liptoncup.com.au/competitor-information>
- 2.8. Eligible boats may enter and pay the required fee by completing the online entry form available on the Nautilus Marine Insurance Lipton Cup Regatta website:
<https://www.liptoncup.com.au/enter-race>
- 2.9. To be considered an entry in the event, a boat shall complete all registration requirements and pay all fees.
- 2.10. Entries close at midnight on Tuesday 11 November 2025.

3. Fees

	Early-bird Before 1/10/25	Regular	Late After 9/11/25
Division Measurement Racing	\$140	\$170	\$210
Division Classic and Cruising	\$100	\$130	\$170

3.1. Refund Policy

- Withdrawal of boat more than one week prior - entry fee, less \$20 Admin fee
- Withdrawal of boat less than one week prior – no refund
- In the case that the OA cancels the event– entry fee, less \$20 Admin fee



4. Racing will be in Divisions

Division	Handicapping	Description
Measurement Racing	AMS, ORC, and EHC	This Division may be split into separate starts at the discretion of the OA considering the number and type of entries
Classic and Cruising	EHC	This Division may be split into separate starts at the discretion of the OA considering the number and type of entries

5. Advertising and Media

- 5.1. Boats may be required to display advertising chosen and supplied by the OA.
- 5.2. By entering the Regatta, the competitors give the OA the unconditional, perpetual right and authority to publish and broadcast anywhere in the world, for any purpose and in any media, photographs, video footage and audio recordings taken of the boat and its crew prior to and during and the Nautilus Marine Insurance Lipton Cup Regatta.



6. Schedule

7.

6.1 Friday Invitational Twilight Race – 14 November

Entries are open to all boats intending to participate in the Nautilus Marine Insurance Lipton Cup regatta to compete in the Invitational Twilight race on Friday 14 November.

Results from the Invitational Twilight Race will not contribute to the overall results for the Nautilus Marine Insurance Lipton Cup Regatta.

Date	Races Scheduled	First Warning Signal	Course Type
Fri 14 Nov	1	1755	Fixed Marks twilight course

Competitors may be organized into separate divisions depending on the number of competitors. Prizes for the Twilight Invitational will be awarded for 1st, 2nd and 3rd on EHC.

A briefing for the Nautilus Marine Insurance Lipton Cup Keelboat Competitors will be held at the RYCV club rooms at the conclusion of the Twilight racing prize presentation.

6.2 Lipton Cup Regatta – 15 and 16 November

Division: Measurement Racing

Date	Races Scheduled	First Warning Signal	Course Type
Sat 15 Nov	3	1155	Windward/Leeward on Alpha course
Sun 16 Nov	1	0955	Long, Fixed Marks Starting on Charlie Course

Division: Classic and Cruising

Date	Races Scheduled	First Warning Signal	Course Type
Sat 16 Nov	1	1055	Long, Fixed Marks starting on Charlie Course
Sun 17 Nov	1	1025	Fixed Marks on Charlie Course

- On the last day of racing no warning signal will be made after 1300.



8. Sailing Instructions

The Sailing Instructions will be available by Tuesday 11 November 2025 on the Nautilus Marine Insurance Lipton Cup Regatta website (www.liptoncup.com.au).

9. Radio Communication

- 9.1. **[DP]** Except in an emergency, a boat that is racing shall not make voice or data transmissions and shall not receive voice or data communication that is not available to all boats.

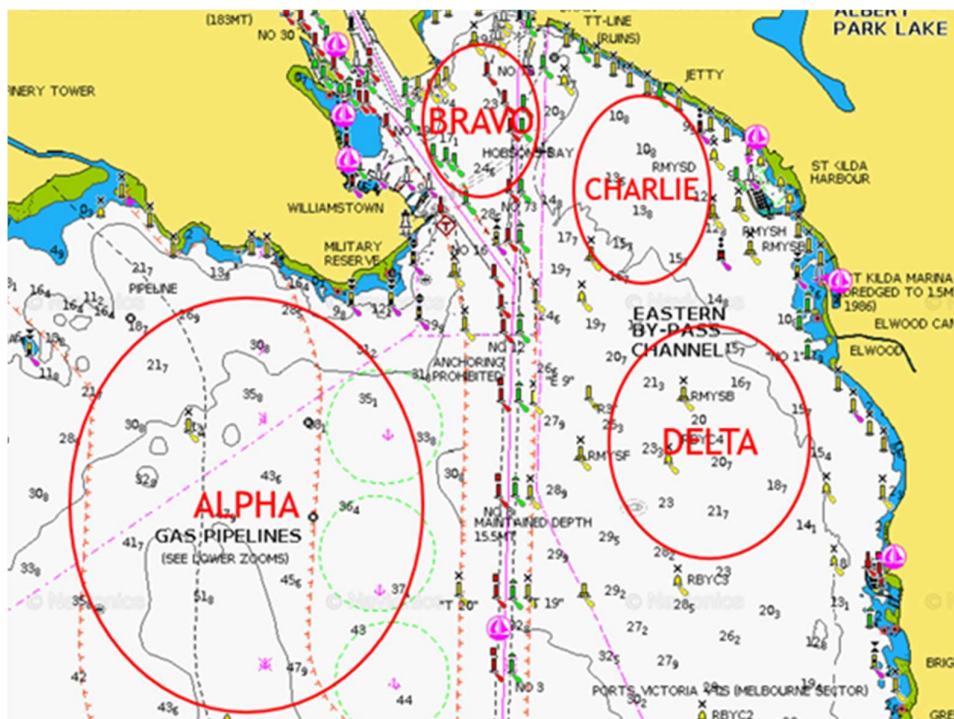
10. Venue

- 10.1. The regatta will be conducted from the Royal Yacht Club of Victoria, 120 Nelson Place, Williamstown. Racing will take place on the waters of Hobsons Bay and Northern Port Phillip.



11. The Courses

The courses will be described in the Sailing Instructions. The general location of the courses is shown below.



12. Scoring

- 12.1. There shall be a minimum of 3 entries to constitute a division.
- 12.2. For each division one (1) race is required to be completed to constitute a series.
- 12.3. For each division a boat's series score will be the total of her race scores.

13. Prizes

Prizes will be awarded as follows:

- 13.1. For the **Measurement Racing Divisions** - first, second, and third place series score in each of AMS, ORC, and EHC.
- 13.2. For **Division Classic and Cruising** - first, second, and third place series score in EHC and AMS.
- 13.3. The **Nautilus Marine Insurance Lipton Cup Perpetual Trophy** will be awarded to the boat winning the series score in each Measurement Racing



Division on EHC and the overall winner of the Classics and Cruising division on EHC.

- 13.4. Additional prizes may be awarded at the discretion of the OA.
- 13.5. The presentation of prizes will take place at RYCV at the end of the final day's racing.

14. Risk Statement

RRS 3 states: "The responsibility for a boat's decision to participate in a race or to continue *racing* is hers alone". By participating in this event each competitor agrees and acknowledges that sailing is a potentially dangerous activity with inherent risks. These risks include strong winds and rough seas, sudden changes in weather, failure of equipment, boat handling errors, poor seamanship by other boats, loss of balance on an unstable platform and fatigue resulting in increased risk of injury. Inherent in the sport of sailing is the risk of permanent, catastrophic injury or death by drowning, trauma, hypothermia, or other causes.

15. Insurance

Each participating boat shall be insured with valid third-party insurance with a minimum cover of AUD \$10 Million per incident or the equivalent and shall produce evidence of currency if requested by the Organizing Authority.

16. Berthing

Berthing is available for all eligible boats attending the regatta on a first-in basis. Bookings for berthing should be made using marina booking form available here; <https://rycv.com.au/yard-marina/visitors/>

17. Further Information

The RYCV club will be open on Friday 14 November for the convenience of all competitors. Food & beverages will be available on race days.

For more information visit the regatta website
<https://www.liptoncup.com.au/> or contact:

Owen Church
RYCV Sailing Manager
sailing@rycv.asn.au
mobile 03 9397 1277



18. CHANGE LOG

Change Number	Change Type	Ver. No.	Description	Date
0	First version	V1.0	Release of first version of the NOR.	1 July 2025
1	After NTC#1	V2.0	Removal of the One Design Divisions.	3 Nov 2025