



# NAUTILUS MARINE INSURANCE LIPTON CUP REGATTA

14 November 2025  
Twilight Invitational Sailing Instructions



# Nautilus Marine Insurance Lipton Cup Regatta Keelboat Classes Invitational Twilight Friday 14th November 2025 Sailing Instructions

1 **RULES** The regatta will be governed by the rules as defined in the Notice of Race

## 2 [SP] CREW DECLARATIONS

- 2.1 All boats shall register their Crew Declarations via the TopYacht Entry System. Crew declarations shall be completed after 0100hrs on the day of the race and before 15 mins prior to the warning signal of the boat's first race of the day via this link [https://topyacht.com.au/db/kb2/mob\\_crew\\_login.php](https://topyacht.com.au/db/kb2/mob_crew_login.php). Failure to lodge a crew declaration will result in the boat being scored DSQ without a hearing for each race the boat fails to lodge a crew declaration for on that day. This changes RRS A5. A QR code to the crew declaration Link is contained in this document.



## 3 NOTICES TO COMPETITORS

- 3.1 The Official Notice Board for the RYCV is at the following website:  
<https://rycv.com.au/sailing/keelboat/notice-to-competitors/>
- 3.2 Any changes to the sailing instructions will be posted on the official noticeboard no later than 2000 on the day preceding the race for which they will take effect.
- 3.3 Attention will be drawn to notices by RRS flags and sound signals. Attention may also be drawn by SMS and/or email.
- 3.4 Signals made ashore will be displayed on the RYCV flagpole. When flag AP is displayed ashore '1 minute' is replaced with 'not less than 45 minutes' in the race signal AP.
- 3.5 Oral amendments to the Sailing Instructions may be made over the Race Management VHF channel prior to the warning signal of the race. Code Flag L may be displayed on the Race Committee Vessel to signal the change. These amendments may be repeated during the race. This amends RRS Race Signals

## 4 COMPETITOR BRIEFING

- 4.1 Competitor briefings for the Saturday and Sunday Lipton Cup Race days will be made as below. Briefings will be held at RYCV and broadcast via Video Conference. A video link will be sent to competitors in advance of the sessions.
- 4.2 **Briefing 1** - Friday 14<sup>th</sup> November at RYCV following an Invitational twilight race. Approximate start time 20:00 in the RYCV restaurant.
- 4.3 **Briefing 2** - Sunday 16<sup>th</sup> November on the RYCV Deck at 08:30.

## 5 RACE SCHEDULE

Date	Races Scheduled	First Warning Signal	Course Type
Fri 14 Nov	1	1755	Fixed Marks twilight course

## 6 RADIO COMMUNICATION

- 6.1 The Race Committee will make Race Management announcements on VHF Channel 69.
- 6.2 Except in an emergency, a boat that is racing shall not make voice or data transmissions and shall not receive voice or data communication that is not available to all boats.

## 7 AREAS THAT ARE OBSTRUCTIONS

- 7.1 The following areas are designated as obstructions: The waters of Webb Dock, the waters West of the Williamstown Channel contained between Gellibrand Pier and Breakwater Pier. These waters are out of bounds; boats shall not race in these waters.
- 7.2 Swing Basins are also obstructions and out of bounds when a vessel with an Length Overall of 50m or greater is maneuvering within the swing basin. Designated swing basins have been established at the following locations:
  - 7.2.1 At the entrance to Webb Dock
  - 7.2.2 Off the end of Gellibrand Pier
  - 7.2.3 Off the end of Station Pier
- 7.3 There is a moving obstruction around any commercial vessel that is under way, extending 500m from the bow, 50m from the stern, and 30m from the sides.
- 7.4 **[DP]** Boats must keep clear of commercial shipping.(See Appendix A) Any boat subject of a complaint by a Ship's master for any reason whatsoever may be protested.

## 8 HEARING REQUESTS

- 8.1 Protests shall be lodged at the Regatta Office within one (1) hour after the finishing time of the last boat of any division to finish. Protest forms may be lodged by email to [sailing@rycv.asn.au](mailto:sailing@rycv.asn.au)
- 8.2 Protests will be heard at a time and place to be notified by the Protest Committee.
- 8.3 The Regatta Office is located at the RYCV OTB Clubrooms.

## **9 [DP] Backstay Identification Flags**

A backstay identification flag shall be flown by all competing yachts while racing.

The flag will be provided to each entrant as part of the Competitor Pack.

The flag shall be displayed on the backstay, or if no backstay is fitted, as near as practicable to the aft-most point of the vessel such that it is clearly visible.

## **10 OFFICIAL VESSELS**

10.1 Official vessels may display the burgee of the Royal Yacht Club of Victoria.

## **11 FURTHER INFORMATION**

For further information please contact:

Owen Church

Sailing Admin

[sailing@rycv.asn.au](mailto:sailing@rycv.asn.au)

mobile 0416149167

# Appendix A – Commercial Shipping

## A1. [DP] [NP] Interfering with Commercial Shipping

If your boat interferes with commercial shipping, or ignores Race Management instructions around commercial traffic, you may be disqualified without a hearing. This changes RRS A5.

## A2. [DP] Using Engines to Avoid Shipping

- You may use your engine only to avoid commercial shipping.
- Report the details to the Race Committee within one hour of finishing.
- You must not gain an advantage from using your engine.
- After using the engine, bring your boat to a complete stop before continuing to race.
- This changes RRS42.

## A3. Stay Clear of Large Ships

- Sailing boats must not get in the way of commercial vessels.
- Keep at least 500 metres ahead of the bow of any large ship.

## A4. Bow Flare and Blind Spots

- Large ships can't see you directly in front of their bow.
- Always stay visible to the ship's bridge.
- Inside 500 metres, your boat may disappear from view because of bow flare or overhanging structures.

## A5. [DP] VHF Radio

- You must carry a working VHF radio (Special Regulations Category 6).
- Keep it switched on and monitor the race channel.
- The Race Committee may use it to provide race updates or navigational warnings.
- If a boat is fitted with an Automated Identifying System (AIS) it will be switched on to allow monitoring by the race committee and commercial vessels.

## A6. Harbour Master Directions

- Read and understand the Harbour Master Directions (Melbourne – Section 5)
- <https://ports.vic.gov.au/marine-operations/harbour-masters-directions/>
- Key points:
  - Keep clear of ships 50m LOA or greater.
  - Keep clear of tugs and line boats assisting other vessels.
  - Be extra careful in shipping channels and fairways.
- Monitor VTS Channel 12 if there's any chance of conflict and respond immediately to calls from commercial vessels.

**A7. Shipping Sound Signals**     5+ short blasts – danger signal; the ship is unsure of your intentions

## Appendix B - Supplementary Sailing Instructions for Friday Invitational Twilight

### B1 CLASS FLAGS

Division	Class	International Code Flag
Div 3	Classic and Cruising	R
Div 2	Measurement Division	E
Div 1 and 1a		T

The Race Committee may combine divisional starts depending on the number of competitors in each division.

### B2 COURSES AND MARKS

Selected from the combined course-book ***Sailing Instruction Attachment 1 - Courses and Marks*** course numbers 20 – 29 and signaled by display of international numeral flags no later than the warning signal. These courses are also included in Appendix C of this document.

### B3 THE START

Races will be started using RRS 26

The starting line will be between the Signal Mast carrying an orange flag on the race committee vessel and course side of the starting mark (orange cylindrical buoy).

The start location will be broadcast on the race channel approximately 30 minutes prior to the first warning.

### B4 THE FINISH

The finishing line shall be an imaginary line between the flag mast bearing a blue flag on the committee vessel and an orange inflatable buoy

### B5 TIME LIMITS

The time limit for the first boat to finish is 1 hour 30 minutes after the start of the last division. If no boats finish within this time the race will be abandoned.

**[SP]** Boats that do not finish prior to the beginning of Nautical Twilight shall be scored DNF. This alters RRS 35



## APPENDIX C – Courses and Course Areas

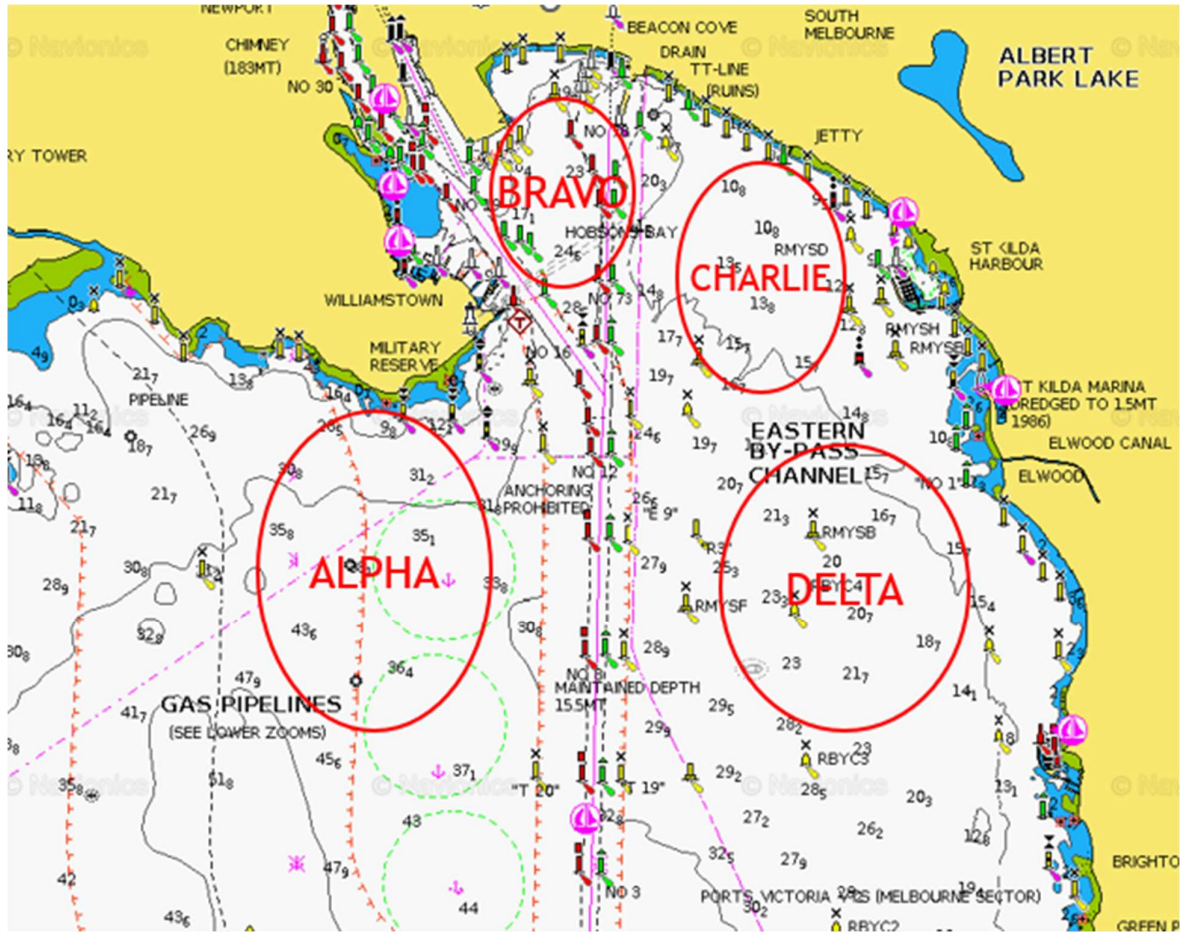


Figure 1 - General Overview of RYCV Course Areas

**Note 1** If noted in the course description, Bounding Marks (Channel 71, 11 and 9) are not marks of the course, these are passing marks and therefore have a required side as indicated.

**Note 2** For all courses, a laid mark may be specified as the first mark after the start. This mark will be an orange inflatable buoy. The mark will be laid approximately to windward of the starting line at approximately 0.5 to 1.0 nm from the starting line. The direction of rounding the mark will be indicated by the display of a green or red flag from the Starting Vessel – green for starboard rounding and red for port rounding.

If no rounding signal flag is made, the mark is deleted from the course to sail.

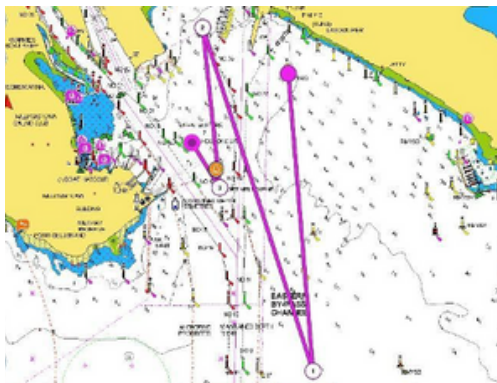
**Note 3** The positions of all marks of the course on the course diagrams are approximate and for illustrative purposes only. They should not be used for navigation and the positions may vary on the day.



# Combined Wednesday Twilights

## Course 20 - Southerly

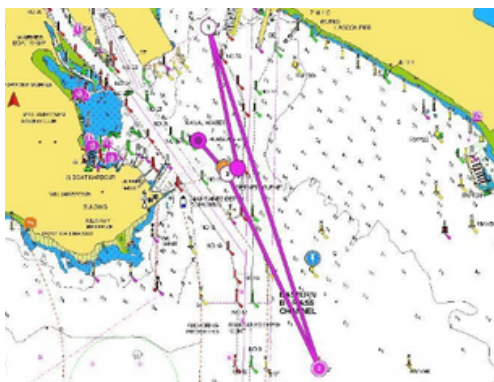
Distance 6.6nm



**Start** - Near RMYS G. **Finish** – X Ray mark  
 Start – east of bounding mark Ch 71, Ch 11, Ch 9 - R3 to starboard - east of bounding mark Ch 9, Ch 11, Ch 71 – R4 to port – V mark to starboard – finish.

## Course 22 - Northerly

Distance 5.2nm



**Start** – Near Ch 72. **Finish** – X Ray mark  
 Start – R4 to starboard - east of bounding mark Ch 71, Ch 11, Ch 9 – R3 to starboard – east of bounding mark Ch 9, Ch 11, Ch 71 - V mark to port – finish.

## Course 24 - Southerly

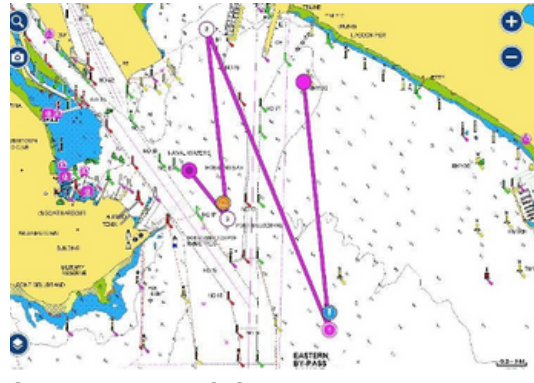
Distance 2.6nm



**Start** – Near RMYS G. **Finish** – X Ray mark  
 Start - east of bounding mark Ch 71, Ch 11 – SB3 to starboard – east of bounding mark Ch 11, Ch 71 - V mark to port – finish.

## Course 21 - Southerly

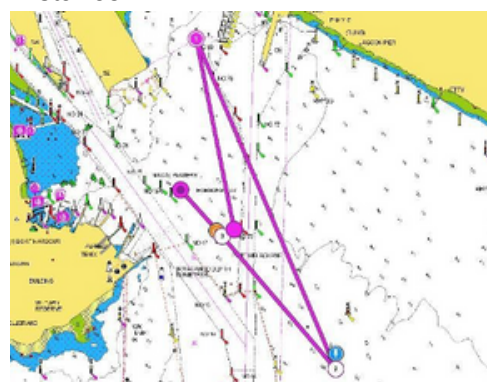
Distance 5.2nm



**Start** - Near RMYS G. **Finish** – X Ray mark  
 Start – east of bounding mark Ch 71, Ch 11 – SB3 to starboard - east of bounding mark Ch 11, Ch 71 – R4 to port – V mark to starboard – finish.

## Course 23 - Northerly

Distance 4.2nm



**Start** – Near Ch 72. **Finish** – X Ray mark  
 Start – R4 to starboard - east of bounding mark Ch 71, Ch 11 – SB3 to starboard – east of bounding mark Ch 11, Ch 71 - V mark to port – finish.

## Course 25 - Northerly

Distance 2.1nm

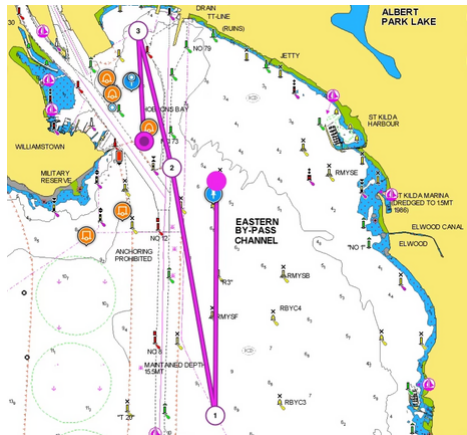


**Start** – Near Ch 72. **Finish** – X Ray mark  
 Start – R4 to port - V mark to starboard – finish.

# Combined Wednesday Twilights

## Course 26 - Southerly

Distance 7.3nm

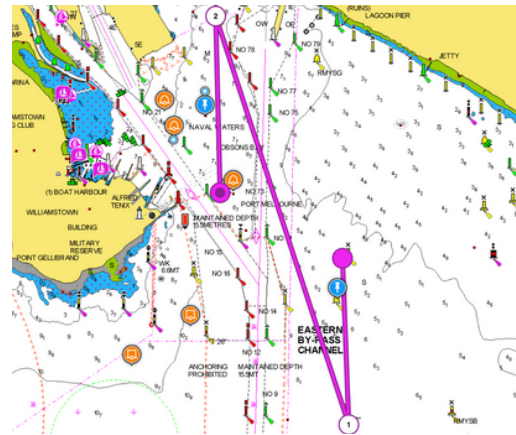


**Start** - Near RMYSC. **Finish** – V mark

Start - east of bounding marks Ch 11, Ch 9, Ch 7, Ch 5 - R2 to starboard - east of bounding marks Ch 5, Ch 7, Ch 9, Ch 11, Ch 71 - R4 to port - finish

## Course 27 - Southerly

Distance 4.8nm

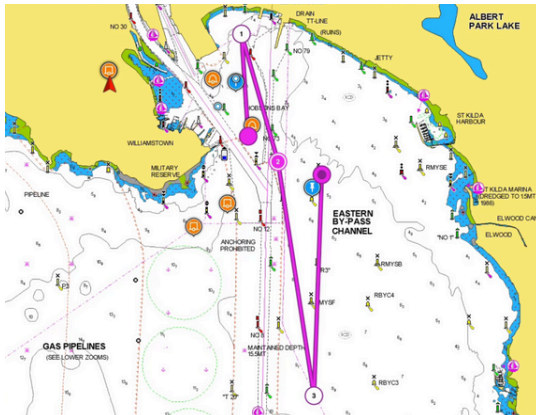


**Start** - Near RMYSC. **Finish** – V mark

Start - east of bounding marks Ch 11, Ch 9 - R3 to starboard - east of bounding marks Ch 9, Ch 11, Ch 71 - R4 to port - finish.

## Course 28 - Northerly

Distance 7.2nm

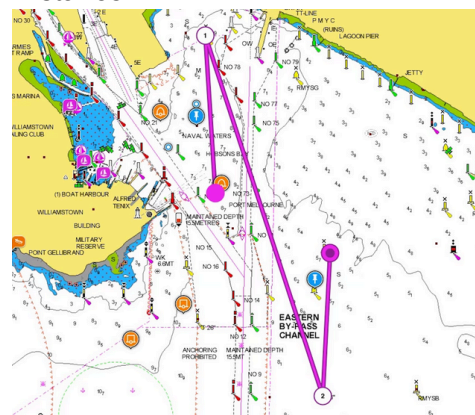


**Start** – near V mark. **Finish** – near RMYSC

Start - R4 to starboard - east of bounding marks Ch 71, Ch 11, Ch 9, Ch 7, Ch 5 - R2 to port - finish.

## Course 29 - Northerly

Distance 4.7nm



**Start** – near V mark. **Finish** – near RMYSC

Start - R4 to starboard - east of bounding marks Ch 71, Ch 11, Ch 9 - R3 to port - finish.

# Marks

The mark positions and descriptions are approximate and a guide only and must not be used for navigational purposes. Detailed locations of marks and features within Port Phillip are depicted on the relevant Charts AUS143, AUS154 and AUS155, as modified by Notices to Mariners.

## A Mark

Laid mark set 250m south of Gellibrand Shoal Mark

<b>Carrum #2</b>		
Special Purpose Buoy	38 03.04S	145 04 52E
<b>Centre Mark</b>		
Special Purpose Buoy – X top mark	38 03.51S	144 52.21E
<b>Channel 7 (Ch.7)</b>		
Port of Melbourne Channel Pile	37 53.83S	144 55.72E
<b>Channel 9 (Ch.9)</b>		
Port of Melbourne Channel Pile	37 53.19S	144 55.75E
<b>Channel 11 (Ch.11)</b>		
Port of Melbourne Channel Pile	37 52.69S	144 55.76E
<b>Channel 17a (Ch.17a)</b>		
Port of Melbourne Channel Pile	37 51.54S	144 55.18E
<b>Channel 19 (Ch.19)</b>		
Port of Melbourne Channel Pile	37 51.48S	144 55.00E
<b>Channel 71 (Ch.71)</b>		
Port of Melbourne Channel Pile	37 52.06S	144 55.76E
<b>Channel 72 (Ch.72)</b>		
Port of Melbourne Channel Pile	37 51.72S	144 55.67E
<b>Channel 73 (Ch.73)</b>		
Port of Melbourne Channel Pile	37 51.72S	144 55.77E
<b>Channel 74 (Ch.74)</b>		
Port of Melbourne Channel Pile	37 51.30S	144 55.68E
<b>Channel 75 (Ch.75)</b>		
Port of Melbourne Channel Pile	37 51.29S	144 55.80E
<b>Channel 76 (Ch.76)</b>		
Port of Melbourne Channel Pile	37 51.09s	144 55.62E
<b>Gellibrand Shoal Mark</b>		
An East Cardinal Mark	37 52.56S,	144 54.90E
<b>Outer Anchorage</b>		
A pile with a light frame	37 56.91S	144 51.49E
<b>P2</b>		
A yellow buoy marked P2	37 55.46S	144 53.19E
<b>P3</b>		
A pile with light frame	37 53.38S	144 52.85E
<b>Pt Cook East Cardinal Mark</b>		
An East Cardinal Mark	37 55.58S	144 48.92E
<b>Pt Cook Sanctuary Limit Mark</b>		
Yellow special purpose beacon	37 55.74S	144 48.69E
<b>Pt Cook South Pile</b>		
Yellow Pile, top mark shape - X shape	37 55.74S	144 48.69E
<b>R2</b>		
Yellow light Buoy marked R2	37 54.54S	144 56.34E
<b>R3</b>		
Yellow light Buoy marked R3	37 53.10S	144 56.23E

<b>R4</b>		
Yellow Buoy located	37 50.70S,	144 55.36E
<b>RMYS A</b>		
A yellow Special Purpose Buoy	37 51.90S	144 57.47E
<b>RMYS B</b>		
A yellow Special Purpose Buoy	37 53.18S	144 57.20E
<b>RMYS C</b>		
A yellow Special Purpose Buoy	37 52.19S,	144 56.41E
<b>RMYS D</b>		
A yellow Special Purpose Buoy	37 51.48S,	144 57.47E
<b>RMYS E</b>		
A yellow Special Purpose Buoy	37 52.15S,	144 57.79E
<b>RMYS F</b>		
A yellow Special Purpose Buoy	37 53.59S	144 56.30E
<b>RMYS G</b>		
A yellow Special Purpose Buoy	37 51.000S	144 56.25E
<b>SB3</b>		
Special Purpose or General Buoy	37 52.48S	144 56.31E
<b>Spoil Ground</b>		
A yellow buoy	37 59.05S	144 53.05E
<b>SYC 5</b>		
Special Purpose Buoy – X top mark	37 58.81S	144 58.38E
<b>T25</b>		
Yellow Transit Lane Mark	37 52.48S	144 55.91E
<b>T28</b>		
Yellow Transit Lane Mark	37 52.31S	144 55.19E
<b>Uniform</b>		
RYCV laid mark	37 55.64S	144°54.97E
<b>V Mark</b> (Volvo Finish mark)		
Yellow Special Purpose Buoy	37 51.80S	144 55.50E
<b>Xray</b>		
RYCV laid mark	37 51.28S	144 54.97E
<b>Zulu</b>		
RYCV laid mark	37 54.20S	144 51.26E