



LIPTON CUP REGATTA

NAUTILUS MARINE INSURANCE LIPTON CUP REGATTA

15 & 16 November 2025
Keelboat Sailing Instructions
Measurement Racing Divisions 1 & 2





Nautilus Marine Insurance Lipton Cup Regatta

Keelboat Classes

Measurement Racing Divisions 1 and 2

Saturday 15 & Sunday 16 November 2025

Sailing Instructions

- 1 **RULES** The regatta will be governed by the rules as defined in the Notice of Race.

2 **[SP] CREW DECLARATIONS**

- 2.1 All boats shall register their Crew Declarations via the TopYacht Entry System. Crew declarations shall be completed after 0100hrs on the day of the race and before 15 mins prior to the warning signal of the boat's first race of the day via this link https://topyacht.com.au/db/kb2/mob_crew_login.php Failure to lodge a crew declaration will result in the boat being scored DSQ without a hearing for each race the boat fails to lodge a crew declaration for on that day. This changes RRS A5. A QR code to the crew declaration Link is contained in this document.



3 **NOTICES TO COMPETITORS**

- 3.1 The Official Notice Board for the RYCV is at the following website:
<https://rycv.com.au/sailing/keelboat/notice-to-competitors/>
- 3.2 Any changes to the sailing instructions will be posted on the official noticeboard no later than 2000 on the day preceding the race for which they will take effect.
- 3.3 Attention will be drawn to notices by RRS flags and sound signals. Attention may also be notified by SMS and/or email.
- 3.4 Signals made ashore will be displayed on the RYCV flagpole. When flag AP is displayed ashore '1 minute' is replaced with 'not less than 45 minutes' in the race signal AP.
- 3.5 Oral amendments to the Sailing Instructions may be made over the Race Management VHF channel prior to the warning signal of the race. Code Flag L may be displayed on the Race Committee Vessel to signal the change. These amendments may be repeated during the race. This amends RRS Race Signals

4 **COMPETITOR BRIEFING**

- 4.1 Competitor briefings will be held at RYCV and broadcast via Video Conference. A video link will be sent to competitors in advance of the sessions.
- 4.2 **Briefing 1** - Friday 14th November at RYCV following an Invitational twilight race. Approximate start time 20:00 in the RYCV restaurant.
- 4.3 **Briefing 2** - Sunday 16th November on the RYCV Deck at 08:30.

5 RACE SCHEDULE

Date	Races Scheduled	First Warning Signal	Course Type
Sat 15 Nov	3	1155	Windward/Leeward on Alpha course
Sun 16 Nov	1	0955	Long, Fixed Marks Starting on Charlie Course

6 RADIO COMMUNICATION

- 6.1 The Race Committee will make Race Management announcements on VHF Channel 69.
- 6.2 Except in an emergency, a boat that is racing shall not make voice or data transmissions and shall not receive voice or data communication that is not available to all boats.

7 AREAS THAT ARE OBSTRUCTIONS

- 7.1 The following areas are designated as obstructions: The waters of Webb Dock, the waters West of the Williamstown Channel contained between Gellibrand Pier and Breakwater Pier. These waters are out of bounds; boats shall not race in these waters.
- 7.2 Swing Basins are also obstructions and out of bounds when a vessel with an Length Overall of 50m or greater is maneuvering within the swing basin. Designated swing basins have been established at the following locations:
 - 7.2.1 At the entrance to Webb Dock
 - 7.2.2 Off the end of Gellibrand Pier
 - 7.2.3 Off the end of Station Pier
- 7.3 There is a moving obstruction around any commercial vessel that is under way, extending 500m from the bow, 50m from the stern, and 30m from the sides.
- 7.4 **[DP]** Boats must keep clear of commercial shipping. (See Appendix A) Any boat subject of a complaint by a Ship's master for any reason whatsoever may be protested.

8 HEARING REQUESTS

- 8.1 Protests shall be lodged at the Regatta Office within one (1) hour after the finishing time of the last boat of any division to finish. Protest forms may be lodged by email to sailing@rycv.asn.au
- 8.2 Protests will be heard at a time and place to be notified by the Protest Committee.
- 8.3 The Regatta Office is located at the RYCV OTB Clubrooms.

9 [DP] Backstay Identification Flags

A backstay identification flag shall be flown by all competing yachts while racing.

The flag will be provided to each entrant as part of the Competitor Pack.

The flag shall be displayed on the backstay, or if no backstay is fitted, as near as practicable to the aft-most point of the vessel such that it is clearly visible.

10 [DP] IN THE CASE OF RACE ABANDONMENT

In the case of the abandonment of the race due to inclement weather, the Race committee requires competitors to indicate their safe return to their berth by sending their Sail Number the word "OK" using either SMS to mobile 0416149167 or by email to sailing@rycv.asn.au. As an example the text "**R7779 OK**" would indicate that the boat with sail number R7779 has returned to her berth with all on board accounted for.

11 OFFICIAL VESSELS

11.1 Official vessels may display the burgee of the Royal Yacht Club of Victoria.

12 FURTHER INFORMATION

For further information please contact:

Owen Church
Sailing Admin
sailing@rycv.asn.au
mobile 0416149167

Appendix A – Commercial Shipping

A1. [DP] [NP] Interfering with Commercial Shipping

If your boat interferes with commercial shipping, or ignores Race Management instructions around commercial traffic, you may be disqualified without a hearing. This changes RRS A5.

A2. [DP] Using Engines to Avoid Shipping

- You may use your engine only to avoid commercial shipping.
- Report the details to the Race Committee within one hour of finishing.
- You must not gain an advantage from using your engine.
- After using the engine, bring your boat to a complete stop before continuing to race.
- This changes RRS42.

A3. Stay Clear of Large Ships

- Sailing boats must not get in the way of commercial vessels.
- Keep at least 500 metres ahead of the bow of any large ship.

A4. Bow Flare and Blind Spots

- Large ships can't see you directly in front of their bow.
- Always stay visible to the ship's bridge.
- Inside 500 metres, your boat may disappear from view because of bow flare or overhanging structures.

A5. [DP] VHF Radio

- You must carry a working VHF radio (Special Regulations Category 6).
- Keep it switched on and monitor the race channel.
- The Race Committee may use it to provide race updates or navigational warnings.
- If a boat is fitted with an Automated Identifying System (AIS) it will be switched on to allow monitoring by the race committee and commercial vessels.

A6. Harbour Master Directions

- Read and understand the Harbour Master Directions (Melbourne – Section 5)
- <https://ports.vic.gov.au/marine-operations/harbour-masters-directions/>
- Key points:
 - Keep clear of ships 50m LOA or greater.
 - Keep clear of tugs and line boats assisting other vessels.
 - Be extra careful in shipping channels and fairways.
- Monitor VTS Channel 12 if there's any chance of conflict and respond immediately to calls from commercial vessels.

A7. Shipping Sound Signals 5+ short blasts – danger signal; the ship is unsure of your intentions

APPENDIX B - Course Areas

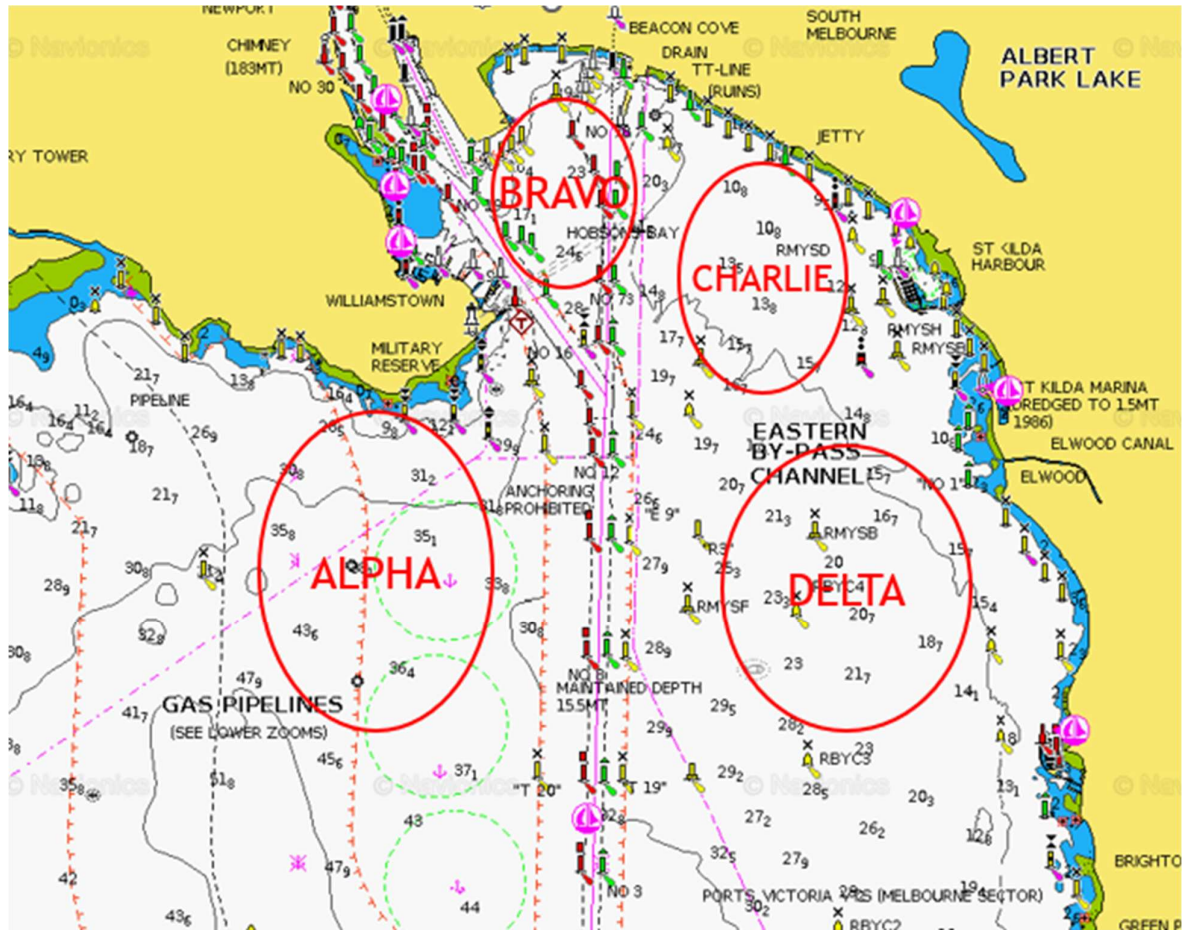


Figure 1 - General Overview of RYCV Course Areas

APPENDIX C - Supplementary Sailing Instructions for Measurement Racing Divisions 1 and 2

C1 CLASS FLAGS

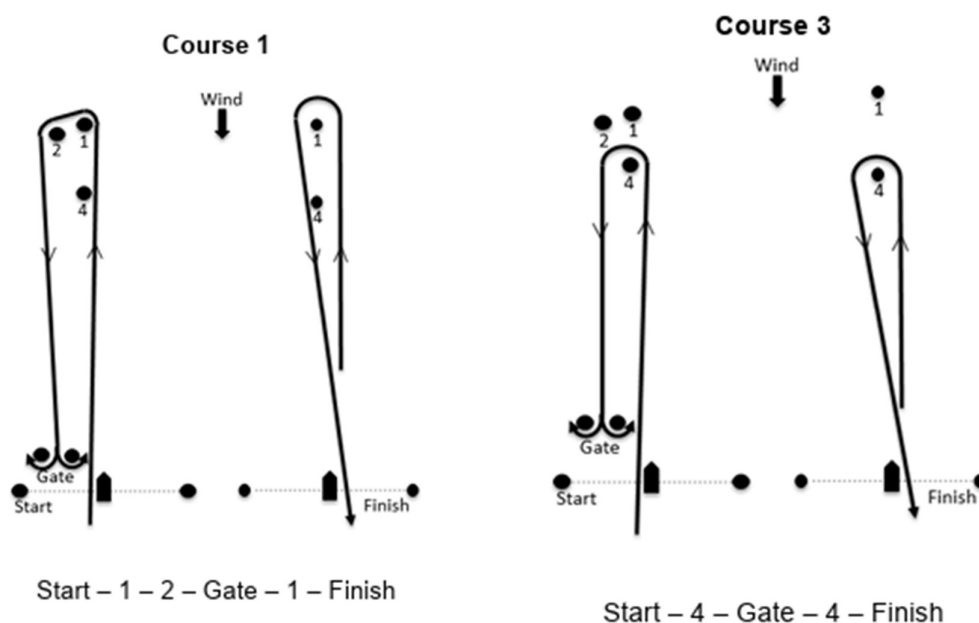
The class flag for Division 1a (Super 40) will be International Code Flag "T"

The class flag for Division 1b will be International Code Flag "R"

The class flag for Division 2 will be International Code Flag "E"

SATURDAY 15 NOVEMBER 2025

C2 SATURDAY COURSES AND MARKS



All marks (except gates) to be left to port.

In the event a Gate mark is missing the remaining mark is to be left to Port.

1, 2, 3P & 3S are Yellow Inflatables, 4 and start mark are Orange Inflatables. The finish mark is blue. In the event a mark is moved or replaced it will be replaced with a mark of similar color with a black stripe.

C3 SATURDAY START

The starting line shall be on Alpha course South of Gellibrand Shoal Mark.

The start line shall be an imaginary line between the flag mast bearing an orange flag on the committee vessel and the start mark.

The Race shall be started according to signals as in RRS 26.

A boat starting more than 10 minutes after their starting signal shall be scored DNS. This changes A4 and A5

C4 SATURDAY FINISH

The finish line shall be an imaginary line between the flag mast bearing a blue flag on the committee vessel and the finish mark.

C5 SATURDAY TIME LIMITS

The time limit for each race will be two hours.

Boats failing to finish within 60 minutes after the first boat in that division finishes or within the time limit, whichever is the latter, will be scored "Did Not Finish" (DNF). This changes RRS 35 and A4

SUNDAY 16 NOVEMBER 2025

C6 SUNDAY COURSES AND MARKS

Two orange inflatable marks forming a gate will be laid up to one nautical mile to windward from the start line and will be the first mark of the course before the designated course marks.

Course	Marks and the side of passing
4 (20nm)	Start, 1(P&S Gate), R2(Std), OA(Std), Lipton A (Std), P2(Std), Lipton A (Std), Gellibrand Shoal (Port), Lipton B (Std), Finish
5 (18nm)	Start, 1(P&S Gate), R2(Std), OA (Port), SG (Port), R2 (Port), Finish
6 (15nm)	Start, 1(P&S Gate), R2(Std), OA(Std), Lipton A (Std), Gellibrand Shoal (Port), Lipton B(Std), Finish
7 (11nm)	Start, 1(P&S Gate), R2(Std), P2(Std), Lipton A(Std), Gellibrand Shoal (Port), Lipton B(Std), Finish
8 (6nm)	Start, 1(P&S Gate), R2(Std), Lipton B (Std), Finish
9 (11nm)	Start, 1(P&S Gate), R2(Port), RMYS B (Port), RMYS A(Port), RMYS G (Port), R 3 (Port), Finish

Mark	Lat approx.	Long approx.
R2	37° 54.533' S	144° 56.339' E
R3	37° 53.16' S	144° 56.39' E
OA Outer Anchorage	37° 56.887' S	144° 51.489' E
SG Spoil Ground	37° 59.068' S	144° 53.022' E
Lipton A (orange inflatable white band)	37° 53.188' S	144° 53.690' E
Pipeline P2	37° 55.426' S	144° 53.183' E
Gellibrand Shoal	37° 52.612' S	144° 54.880' E
Lipton B (orange inflatable white band)	37° 51.364' S	144° 56.495' E
RMYS B	37° 53.207' S	144° 57.224' E
RMYS A	37° 51.901' S	144° 57.479' E
RMYS G	37° 50 945' S	144° 56.104' E
Start /Finish (Orange inflatable)	Charlie Course West of St Kilda breakwater	
Gate P/S (Orange inflatable)	Up to 1nm to windward of the start line	

C7 SUNDAY START

The starting line shall be on Charlie Course West of St Kilda breakwater

The Race shall be started according to signals as in RRS 26.

A boat starting more than 10 minutes after their starting signal shall be scored DNS. This changes A4 and A5.

C8 SUNDAY FINISH

The finish line shall be an imaginary line between the flag mast bearing a blue flag on the committee vessel and the finish mark.

C9 SUNDAY TIME LIMITS

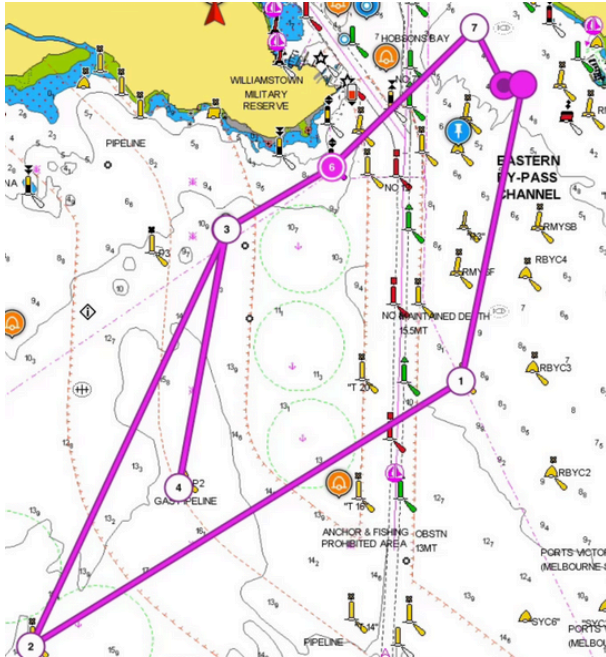
The time limit for each race will be four hours.

Boats failing to finish within 60 minutes after the first boat in that division finishes or within the time limit, whichever is the latter, will be scored "Did Not Finish" (DNF). This changes RRS 35 and A4

C8 COURSE DIAGRAMS

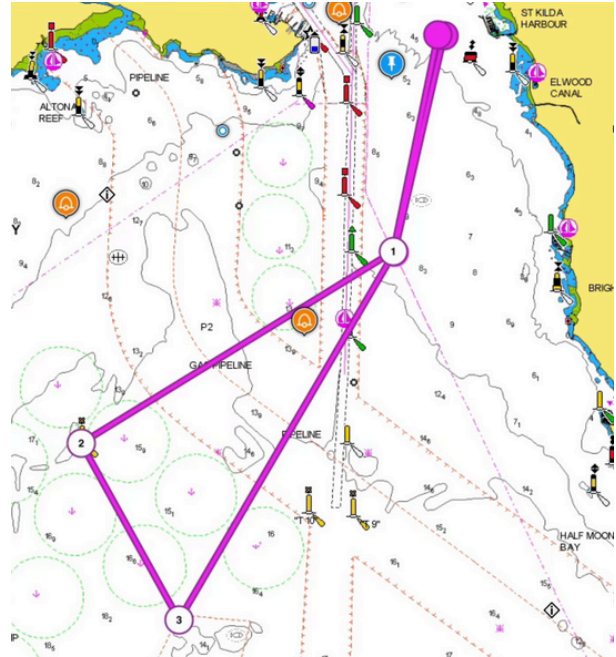
The following section contains an overview of the long-distance courses and are provided to show the general layout of each course. These diagrams should not be used for navigational purposes

Course 4 - Distance 20nm



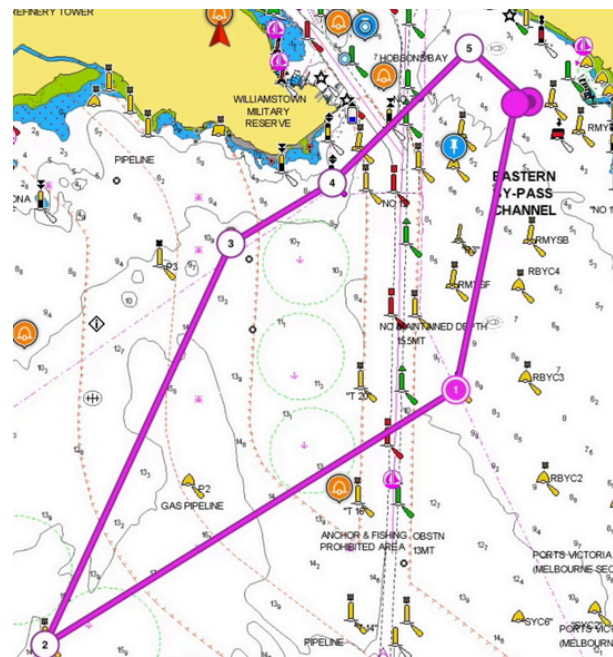
Start/Finish – West of St Kilda Breakwater
 Start - P/S gate – R2 to starboard - OA to starboard - Lipton A to starboard - P2 to starboard - Lipton A to starboard - Gellibrand Shoal to port - Lipton B to starboard - finish.

Course 5 - Distance 18nm



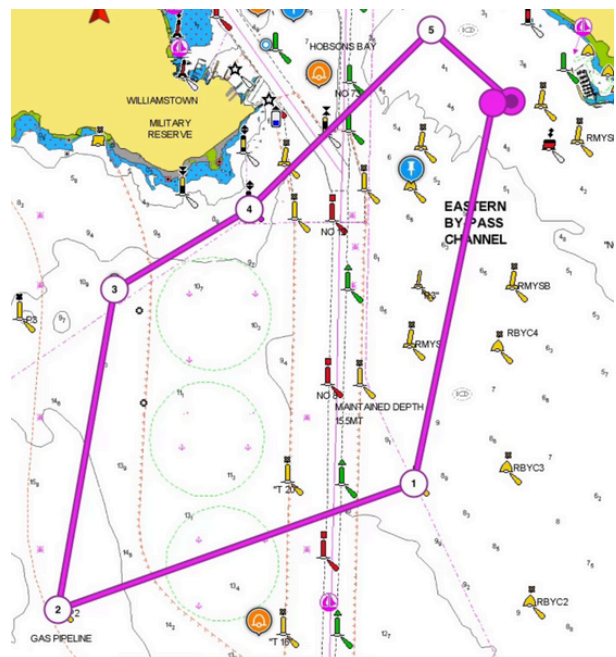
Start/Finish – West of St Kilda Breakwater
 Start - P/AS gate – R2 to starboard - OA to port - SG to port - R2 to port - finish.

Course 6 - Distance 15nm



Start/Finish – West of St Kilda Breakwater
 Start - P/S gate – R2 to starboard - OA to starboard - Lipton A to starboard - Gellibrand Shoal to port - Lipton B to starboard - finish.

Course 7 - Distance 11nm



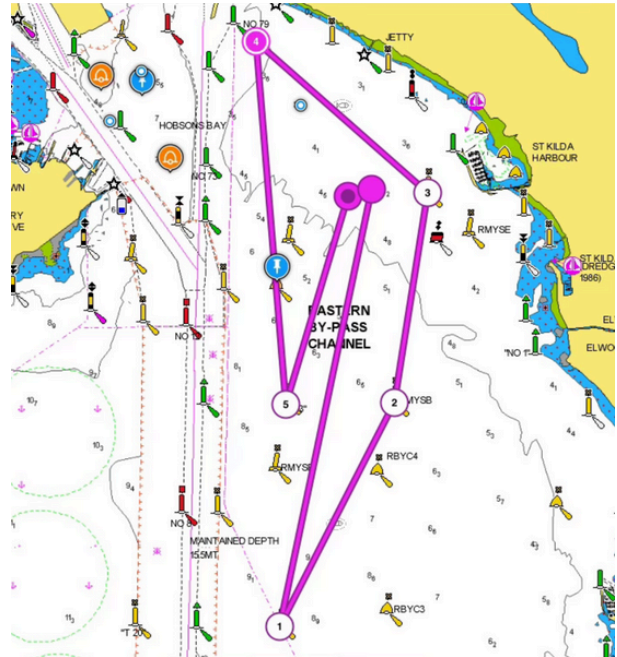
Start/Finish – West of St Kilda Breakwater
 Start - P/S gate – R2 to starboard - P2 to starboard - Lipton A to starboard - Gellibrand Shoal to port - Lipton B to starboard - finish.

Course 8 - Distance 6nm



Start/Finish – West of St Kilda Breakwater
 Start - P/S gate – R2 to starboard - Lipton B to starboard - finish.

Course 9 - Distance 11nm



Start/Finish – West of St Kilda Breakwater
 Start - P/S gate – R2 to port - RMYS B to port - RMYS A to port - RMYS G to port - R3 to port - finish.